

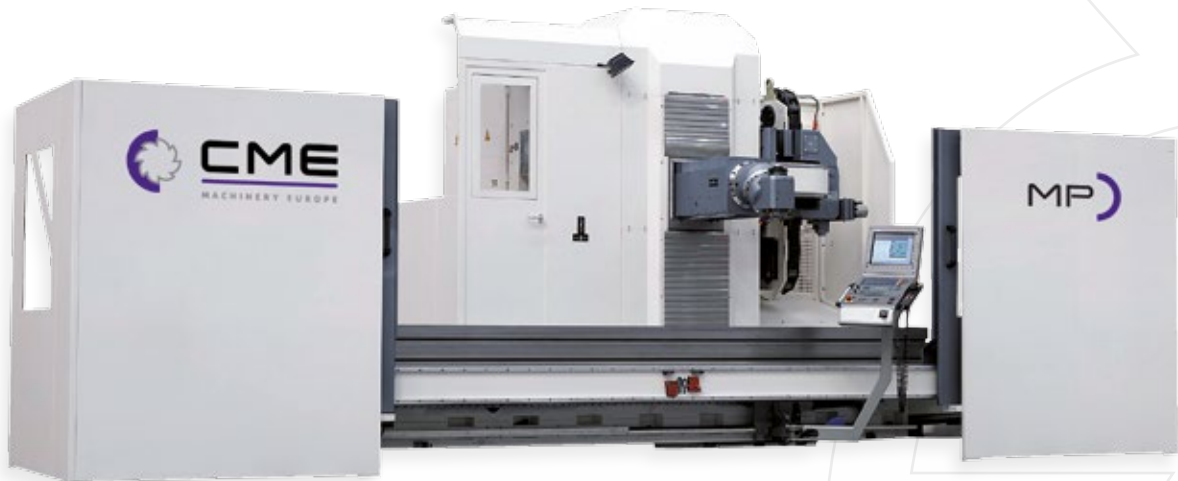


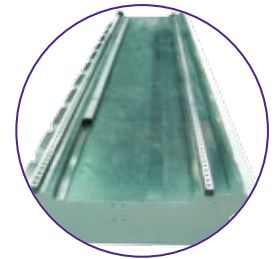
CME
MACHINERY EUROPE

▼ **PM · Travelling column milling machines with fixed table**

Designed by means of the calculation of finite elements, the MP model is based on a solid and rigid construction, what assures the customer high flexibility and complete security.

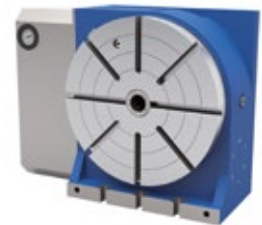
The applications and variants of the MP are multiples, with the feeds up to the 30.000 mm. and the possibility of working in pendulous, with integrated rotary tables or magnetic plates and milling heads manual, automatic or even continuous with linear drives, all this with complete security for the worker. This characteristics make CME's MP model the best milling machine of its type in the market





TRAVELS		
Longitudinal (axis X)	mm	3000 /... / 20000
Cross (axis Y)	mm	1200
Vertical (axis Z)	mm	1100 / 1600 / 2000
TABLE		
Table surface - CME table	mm	X + 500 mm x 1200
No. T-Slots and width of T-Slots	nº/m	7 un. 22 mm
Distance between T-slots	mm	140
Maximum admissible weight on table	Tn/m ²	6
MAX FEED		
Working feed	mm/min	9000
Rapid feed	mm/min	30000
SPINDLE		
Main motor power	Kw	26
Taper type	ISO	ISO - 50
Pull Stud	DIN	69871
Spindle range (*)	rpm	50 / 5000
Tool clamping power (hydromechanic clamp)	Kg	1700
DOUBLE PIGNON & RACKS		
Longitudinal axis (X) - Decreaser	mm	Module 5
SPHERIC BALLSCREW (Double precharged nut)		
Cross axis (Y) (diameter/travel)	mm	50 x 20
Vertical axis (Z) (diameter/travel)	mm	63 x 20
ACCURACY **		
Positioning	mm	± 0,01
Repeatability	mm	± 0,005
OTHERS, DIMENSIONS		
Standard colour	RAL	GREY RAL 9001-7024
APPROXIMATE MACHINE WEIGHT	Kg	20000 / 45000

▶ Rotary table 4th axis



▶ Digital CNCs



** NOTE: Depending on travels the precisions can be modified

▶ Standard Equipment

- Casting column with arcade design
- Digital motors and drives
- Linear scales in 3 axis
- CNC controls (FANUC, Heidenhain, Fagor)
- Rolling guides and rollers in 3 axis
- Double rack pinion system in X axis
- Moderated and rectified ballscrews with double preloaded nut
- Thermal compensation
- Hydraulic compensation of vertical movement by cylinder
- Motor brake in vertical axis
- Hydraulic unit
- Centralised automatic lubrication system
- Complete coolant system
- Centralised control panel
- Portable electronic handwheel
- Electrical cabinet cooling unit
- Rackpinion air-oil lubrication at X axis
- Integral carenage (except cover)
- Longitudinal chip conveyor
- Automatic universal milling head 1°x2.5°
- (*) RPM: 4000 standard / 5000 optional
- Rigid tapping
- Internal tool cooling
- Automatic tool changers

▶ Options

- Tilting and rotary tables
- Measuring process for tool and pieces

* CME Machinery Europe reserves the right of making changes to this catalogue without prior notice due to innovation and continuous improvement of the product.

A member of:



Headquarters

Pol. Ind. Itziar, Parcela M 4.3
20829 Itziar-Deba (Gipuzkoa) · Spain

Tel.: +34 943 199 324
cme@cmemachine.com

www.cmemachine.com